



## BREAKFAST

### CEREAL, TOAST & JUICE STATION \$8

Cereal, toast & juice from the buffet

### HAM & CHEESE TOASTIE (GF AVAILABLE) \$13

Blend of 3 cheeses (tasty, cream cheese and parmesan) and shaved ham  
(Cereal, toast, juice and coffee station included)

### ROAST CHICKEN AND GUACAMOLE TOASTIE \$13

Combination of roasted chicken and guacamole  
(Cereal, toast, juice and coffee station included)

### WINKIPOPS OATMEAL \$13

Warm creamy oats served with cinnamon sugar and seasonal fruit (Cereal, toast, juice and coffee station included)

### VEGAN BREAKFAST BURRITO \$18

Smashed avocado, tomato, red onion, mushrooms, spinach and lime juice wrapped in a warm flour tortilla.  
(Cereal, toast, juice and coffee station included)

### BREAKFAST B.L.A.T. (GF AVAILABLE) \$18

Grilled egg, topped with bacon, fresh lettuce, smashed avocado and sliced tomato on a brioche bun. Served with mini hash-browns on the side  
(Cereal, toast, juice and coffee station included)

### EGGS BENEDICT...YOUR WAY (GF AVAILABLE) \$20

Served on a focaccia with spinach, hollandaise sauce, and hash brown. Your choice of the below:  
- Double smoked ham, bacon or spinach (V)  
(Cereal, toast, juice and coffee station included)

### AMERICAN BREAKFAST \$20

2 pancakes with maple syrup on the side, 2 eggs cooked your way, bacon and hash browns  
(Cereal, toast, juice and coffee station included)

## COFFEE

	Small	Large
Cappuccino	\$4.80	\$5.80
Latte	\$4.80	\$5.80
Flat White	\$4.80	\$5.80
Long Black	\$4.80	\$5.80
Chai Latte	\$4.80	\$5.80
Mocha	\$4.80	\$5.80
Hot Chocolate	\$4.80	\$5.80
Espresso	\$3	
Macchiato	\$3	
Baby-Cino	\$2	
Add syrup (Caramel, Hazelnut, Vanilla, Salted Caramel, Pure Cane Sugar)		+70c

## POT OF TEA

English Breakfast, Earl Grey, Chamomile, Chai, Peppermint, Green Tea w Jasmine \$4.80

## MILKSHAKES

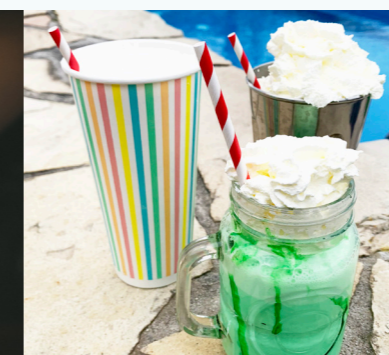
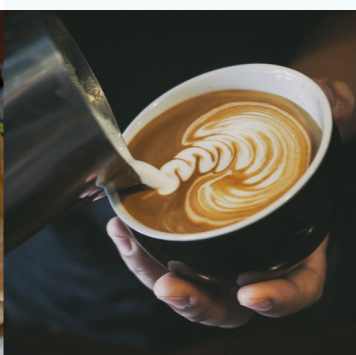
Chocolate	\$6
Caramel	\$6
Banana	\$6
Strawberry	\$6
Vanilla	\$6
Lime	\$6
Cookies and Cream	\$6
Blue Heaven	\$6
Honeycomb	\$6
Spearmint	\$6
Mango	\$6

### Try a combo:

- **Mars Bar** (50% chocolate, 50% caramel)
- **Choco Mint** (50% chocolate, 50% Spearmint)
- **Mango Banana** (50% banana, 50% Mango)
- **Caramel Banana** (50% caramel, 50% banana)

...and any other flavour combo you can imagine!

Make it a Thickshake +\$2



### GRANOLA, YOGHURT AND SEASONAL FRUIT \$15

Bowl of granola, greek yoghurt and seasonal fruit  
(Cereal, toast, juice and coffee station included)

### WINKIPOPS HOTCAKES \$18

Served with sliced banana, nutella, maple syrup and vanilla ice cream  
(Cereal, toast, juice and coffee station included)

### BREAKFAST BURRITO \$18

Bacon, scrambled eggs, smashed avocado, mild tomato salsa, hash browns and grated cheese all wrapped in a warm flour tortilla.  
(Cereal, toast, juice and coffee station included)

## FOR THE KIDS

12 years or younger

### CEREAL, TOAST & JUICE STATION \$6

Cereal, toast & juice from the buffet

### BANANA BREAD \$6

toasted and served with butter

### HAM & CHEESE TOASTIE (GF AVAILABLE) \$8

Blend of 3 cheeses (tasty, cream cheese and parmesan) and shaved ham

### WINKIS HOTCAKE \$8

Single hotcake served with sliced banana and maple

### HOT CHOCOLATE \$6

Winkipop's Signature Hot Chocolate, Salted Caramel

### ICED DRINKS \$5.50

Iced Chocolate, Iced Caramel, Iced Coffee, Iced Milo

## JUICE

Orange, Apple, Pineapple, Tomato	\$4 glass
Joe's Juice Classic Range	\$5.50
Kid's Poptop	\$4.50

## BREAKFAST COCKTAILS

### CRANBERRY MIMOSA \$12

Cranberry Juice and Sparkling Rose Prosecco

### BREAKFAST MARTINI \$14

Orange marmalade, Triple Sec, Gin and lemon juice

### BLOODY MARY \$14

Arktika Vodka, Tomato Juice, lemon juice, Worcestershire sauce and a dash of tabasco sauce



## BREAKFAST INCLUDED?

If you have Breakfast included with your room, see our friendly team and they will check your name off their list. You can choose any item off the menu, and also have access to the cereal, toast & juice station while your meal is prepared.  
**Note: Barista made coffee and packaged drinks are not included in breakfast rate.**



## CLUB WYNDHAM OWNER?

We extend a warm welcome to our valued owners. Please advise our team that you are an owner and receive 15% discount. If you are not an owner, and want to find out more information, please see our Reception team.



GF - Gluten Free  
GFA - Gluten Free available  
V - Vegetarian  
VA - Vegetarian Available  
DF - Dairy Free